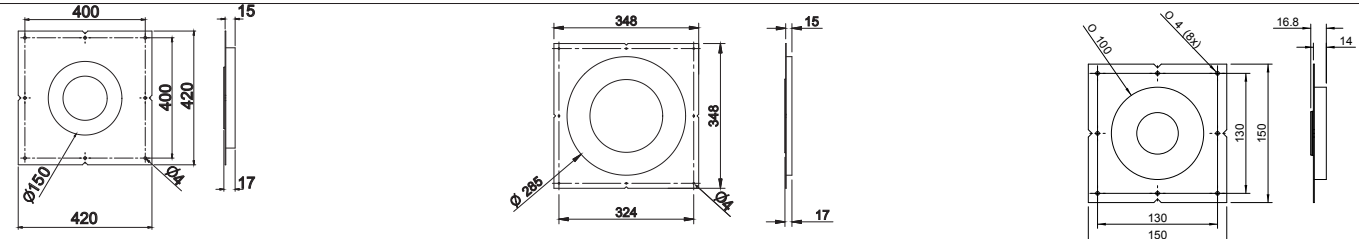
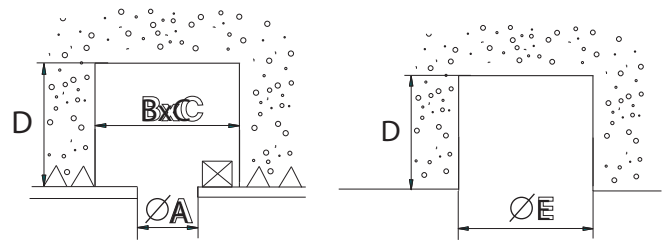


technics	In case of precast concrete panels, gear inclusive.	In case of finished concrete ceiling, gear exclusive.	Name	Reference	Lamp type	Ø A	B	C	D	Ø E	
			Concrete plasterkit aplis 80	KR737702	QR-CBC51 LED dir (Kr93773x) LED dir (Kr93793x) Fixed, WW (Kr93703x, Kr93733x) Audio Diapason 40/80/120 base ATO 80 single and double	152 152 152 152 152 152	320 300 344 260 200 260	320 300 344 260 200 300	200 157 120 100 130 70*	170 250 380 250 152 110	
1 cut out	<p>** Mind that the driver dimensions WxH cannot exceed 67x29,5mm! the length of the driver determines D as it has to be pushed perpendicular through the plasterkit. Depth = length of the driver + 30mm</p>			Concrete plasterkit aplis 165	KR737712	QT12-ax QR-LP111/LED-LP111 HIT-TC HIR-CE111 QT12-ax WW HIT-TC WW LED wallwasher LED	287 287 287 287 287 287 287 287	300 300 300 300 300 300 300 300	300 300 300 300 300 300 300 300	200 230 230 230 175 205 200 200	287 287 287 287 287 287 287 287
				Concrete plasterkit aplis 40	KR737602	LED dir, fixed, WW	110	110	110	80	110



2 dimensions	Aplis 80	Aplis 165	Aplis 40
--------------	----------	-----------	----------

3 installation	Put the plasterkit through the hole.	Fix the plasterkit with screws.	Fill around perimeter of plasterkit using suitable filler and plaster to hide screws and plasterkit.

4 installation	Minimum filler distance, spread out until zero.	For installing aplis 80 and 165, see the corresponding installation manual.