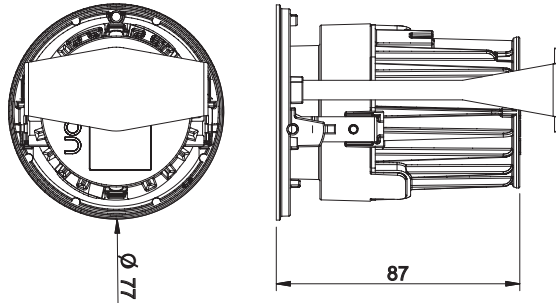


kreon

technics

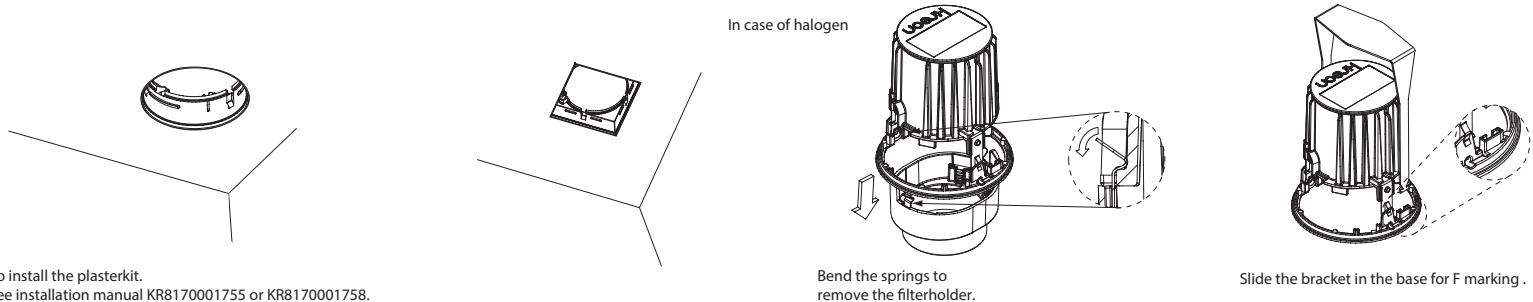


Name	Reference	Voltage ⚡	Drive current
Module 80 QRCS51	KR917703	12V	
Module 80 LED 1300lm CRI83	KR917733-83xx		700mA
Module 80 LED 965lm CRI98	KR917733-98xx		500mA
Module 80 LED dir	KR91793x		700mA
Module 80 HIPAR16	KR917753	230V/1,5kV	

The luminaire must not under any circumstances be covered with heat insulating covers or similar materials.
Cables must not touch the luminaire housing.
The connection cable must be routed so that it does not touch the lamp when the luminaire is tilted.

1 dimensions

2 installation



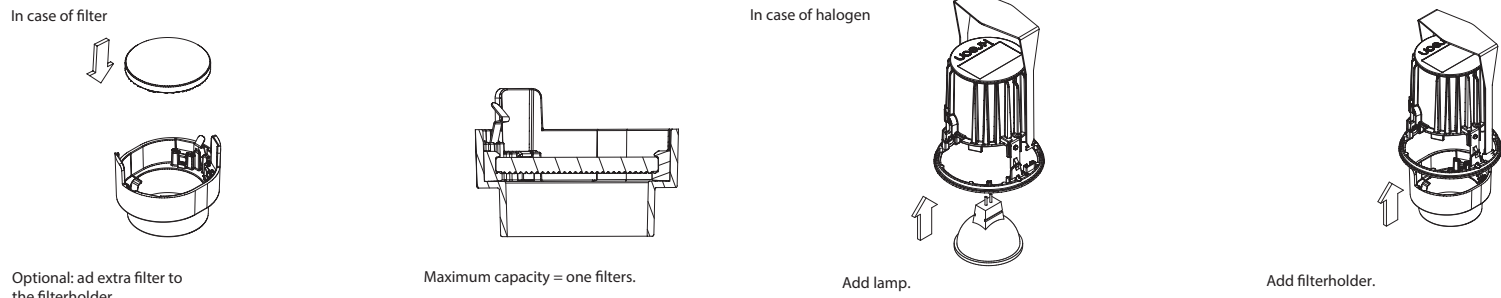
To install the plasterkit.
See installation manual KR8170001755 or KR8170001758.

In case of halogen

Bend the springs to
remove the filterholder.

Slide the bracket in the base for F marking .

3 installation



In case of filter

In case of halogen

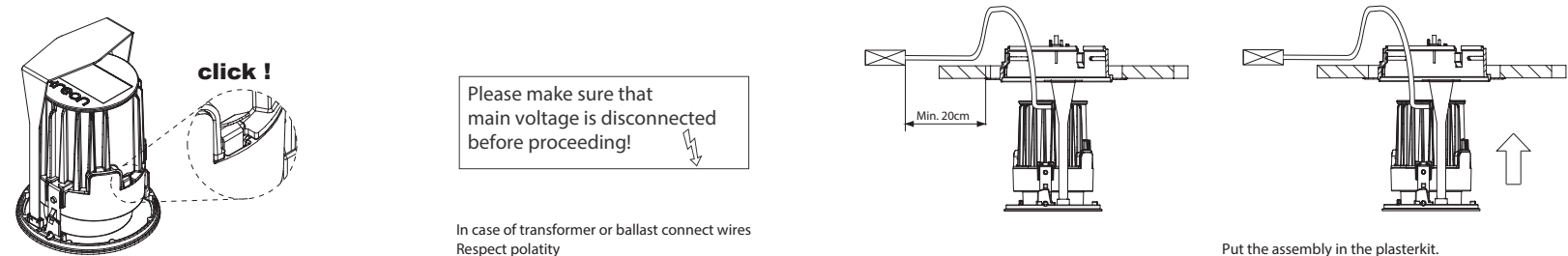
Optional: add extra filter to
the filterholder.

Maximum capacity = one filters.

Add lamp.

Add filterholder.

4 installation

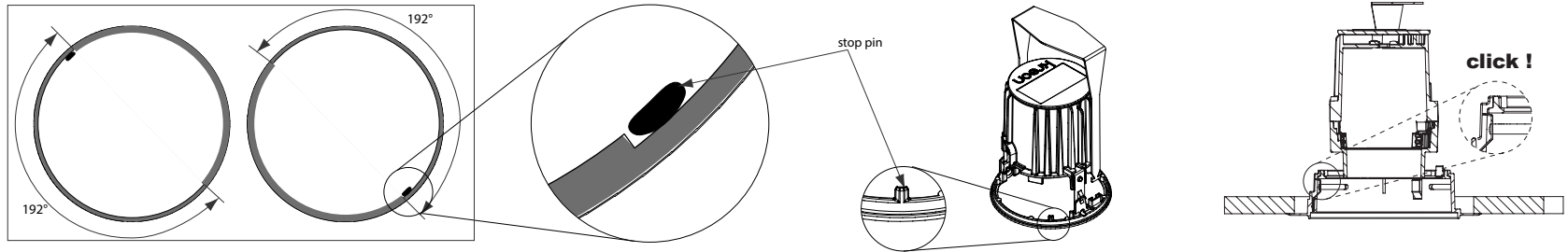


Please make sure that
main voltage is disconnected
before proceeding! ⚡

In case of transformer or ballast connect wires
Respect polarity

Put the assembly in the plasterkit.

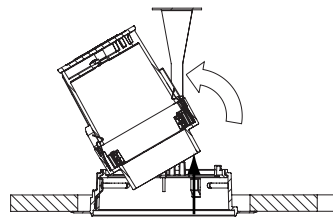
technics



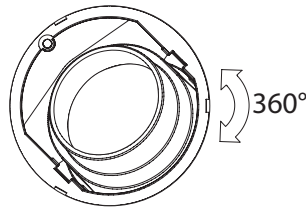
5 installation

In case of the double version, place the module so the stop pin is located in the indicated area. (192°)

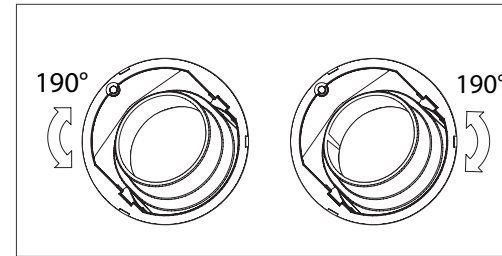
6 installation



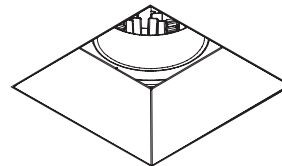
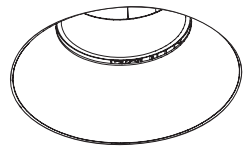
Push at the filterholder to rotate inner part manually.



Turn inner part manually.



In case of the double version 2x190°



To install the louvre see manual KR8170001761 or KR8170001762.