

**BRANDVAN**  
**EGMOND**

## PRESS RELEASE GALAXY COLLECTION



“ENERGY AND MOVEMENT MADE VISIBLE,  
MEMORIES FORMED IN SPACE.”

Design by William Brand

Naarden, The Netherlands

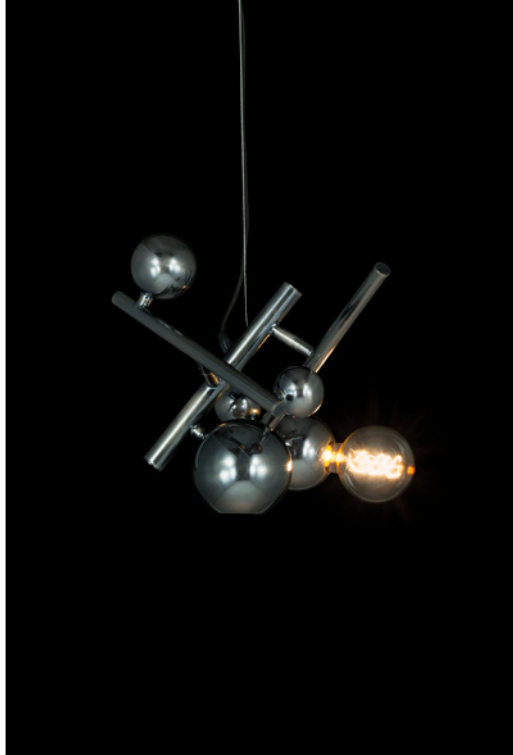
‘There is movement and movement. There are movements of small tension and movements of great tension and there is also a movement which our eyes cannot catch although it can be felt.’ - Russian painter Kazimir Malevich

The Galaxy is a constellation of energy, movement and form. Propelling away from the centre of gravity towards clouds of stardust and outer planets. Orbiting through space, the composition offers a different experience when seen from different angles. Through an interaction between lines and globes, the energy and movement is made visible.

Avant-Garde by nature, the shapes and forms of the Galaxy relate to each other as the planets towards the sun. The artist and the dreamer both know, space is where an image grows.



The new collection Galaxy fell into the 21st century without a trace of regret from a different era, lightyears away. A lasting design has to have roots.



**William Brands comments on his work:**

“Geometry is to open up the mind, towards that what has always lain behind the construction of time and space; the illusion that time and space construct. Light is the principal beauty for a space: it determines and expresses simultaneously.”



**WILLIAM BRAND**

**designer, architect and founder**

William was trained as an artist and an architect. He graduated at the Utrecht School of Arts.

As an award-winning furniture designer he for many years designed buildings and interiors for fashion brands, including the headquarters of BRAND VAN EGMOND. His interior designs are always minimalist, in contrast to his lighting designs which have a powerful sculptural presence. He considers his lighting objects the cherry on the cake.

His way of working is quite specific. Immediately after defining the concept he starts working in the workshop like a sculptor; experimenting and crafting while having the object grow in his hands, often with unexpected results. Therefore the journey is just as exciting and important as the destination.

**BRANDVAN  
EGMOND**

# BRAND VAN EGMOND - IMAGE DATA BANK

We have created an account for you on our image Data Bank.

Please [click here](#) and login:

Login:

Password:

Project/searchname: **GALAXY**

**BRAND VAN EGMOND B.V.**

Nikkelstraat 41

1411 AH Naarden

The Netherlands

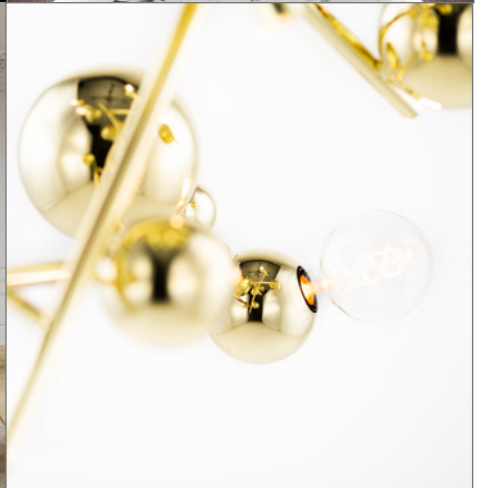
T +31 (0)35 692 12 59

F +31 (0)35 691 17 25

E [press@brandvanegmond.com](mailto:press@brandvanegmond.com)

W [www.brandvanegmond.com](http://www.brandvanegmond.com)

For further information please contact: [press@brandvanegmond.com](mailto:press@brandvanegmond.com) or call Jolanda Eijkman for any question you might have or for our high res images.



For images of our collections and much more, visit our **Image Data Bank** and get inspired!